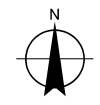


RM of Cambria No. 6 Zoning Bylaw Map



This is the Zoning Bylaw Map Referred to in Bylaw No. _____

Adopted By the
Rural Municipality of Cambria No. 6

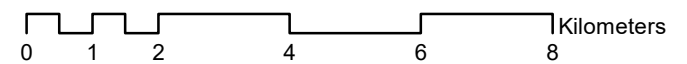
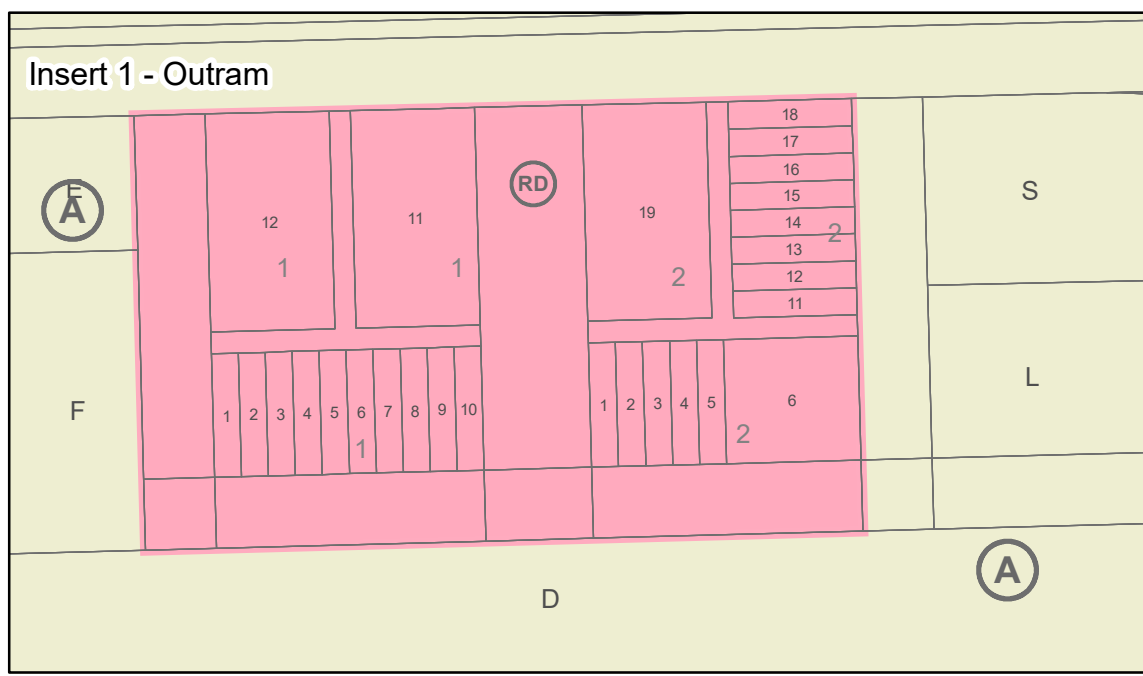
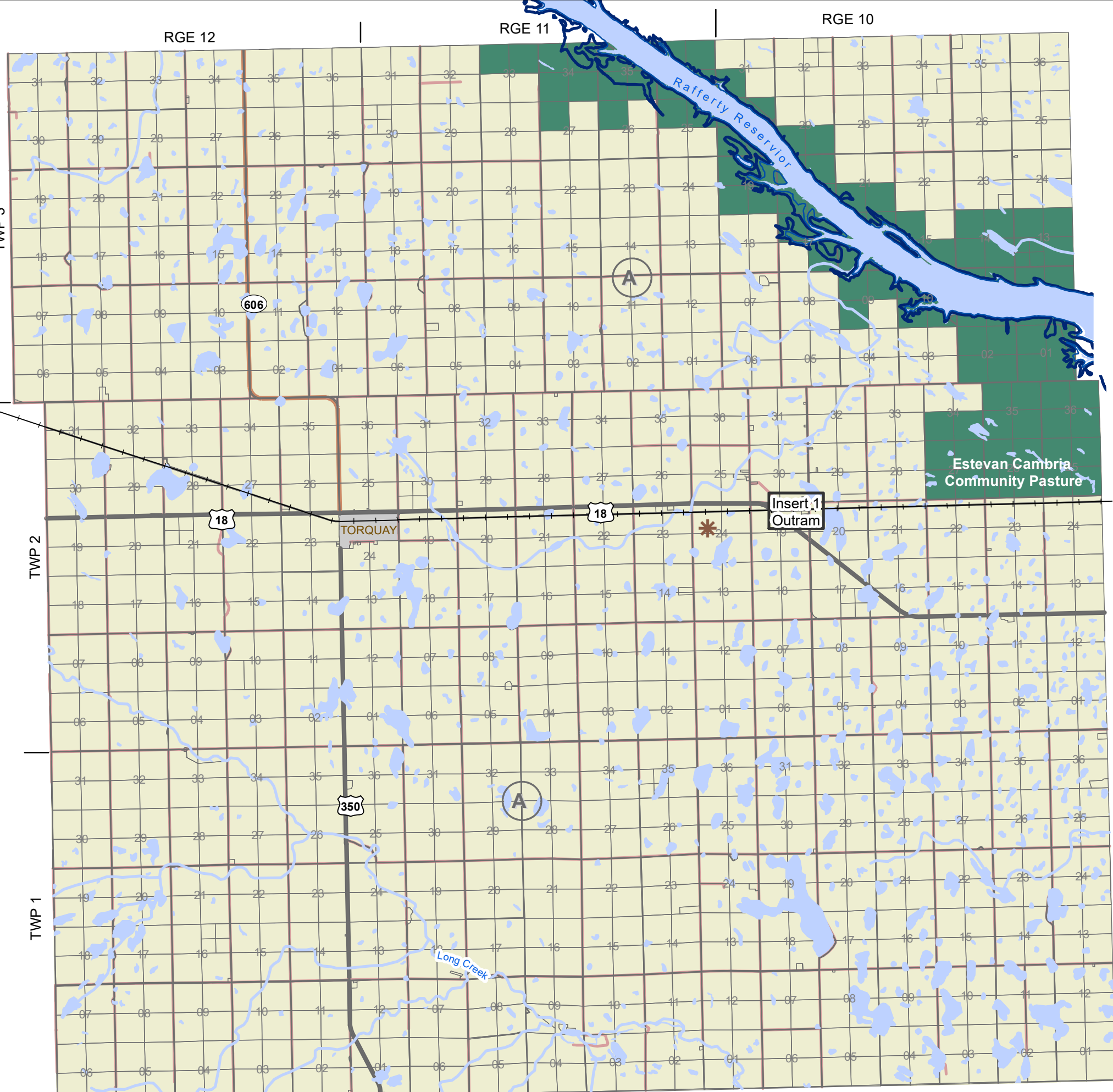
Reeve

Administrator

Legend

- A - Agricultural District
- ES - Environmentally Sensitive District
- RD - Residential District
- C - Commercial District

- Secondary Roads
- Primary Grid
- Provincial Highway
- Rail
- Maximum Allowable Flood Level
- Water Course
- Waterbody
- Urban Municipality
- ✱ Solid Waste Site (Closed)



Source:
Surface Layer geospatial data is from Information Services Corporation, Sask Surface Cadastral Dataset. Reproduced with the permission of Information Services Corporation.
All other geospatial data is from Natural Resources Canada or from the Government of Saskatchewan.

Map is for reference use only and SARM is not responsible for any errors or omissions which may be present on map. It is the responsibility of the user to verify accuracy of the information since changes may have occurred since the time of the map creation.